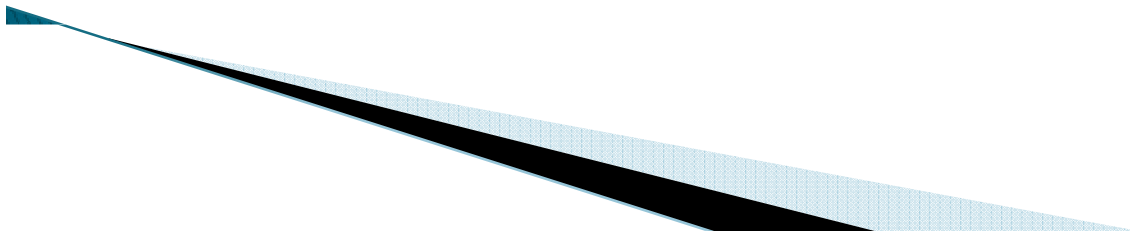


## 2011 Financials Review and Observations

1. Fund Status 2011
2. Cash Balance History 2001-2012
3. Rainy Day Balance History 2004-2012
4. Circuit Breaker Impact Analysis
5. What does this mean for FCSC

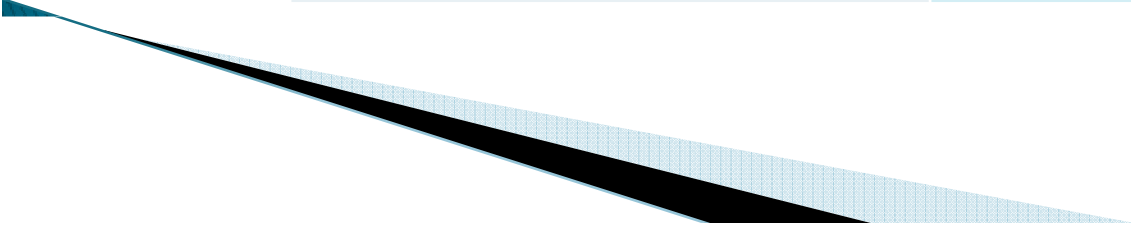
# Fund Status 2011

Fund	Beginning Balance 2011	Ending Balance 2011
General Fund	\$1,218,852.82	\$1,530,970.06
Debt Service	\$6,191,157.32	\$5,158,327.76
Capital Projects	\$1,000,000.00	\$808,007.25
Transportation Operating	\$1.00	\$37,889.85
Transportation Bus Replacement	\$684,182.60	\$400,000.00
Rainy Day Fund	\$2,023,918.34	\$3,671,590.60

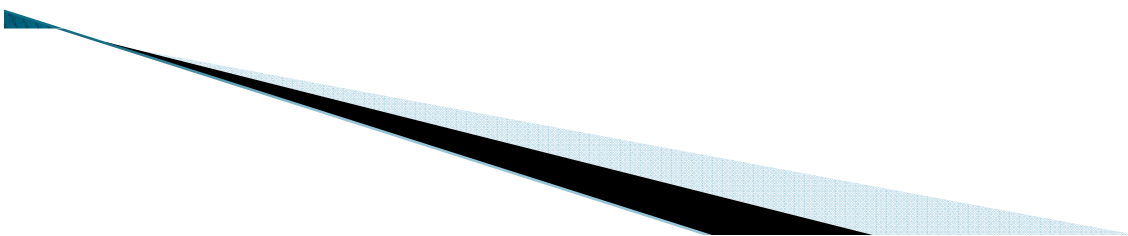
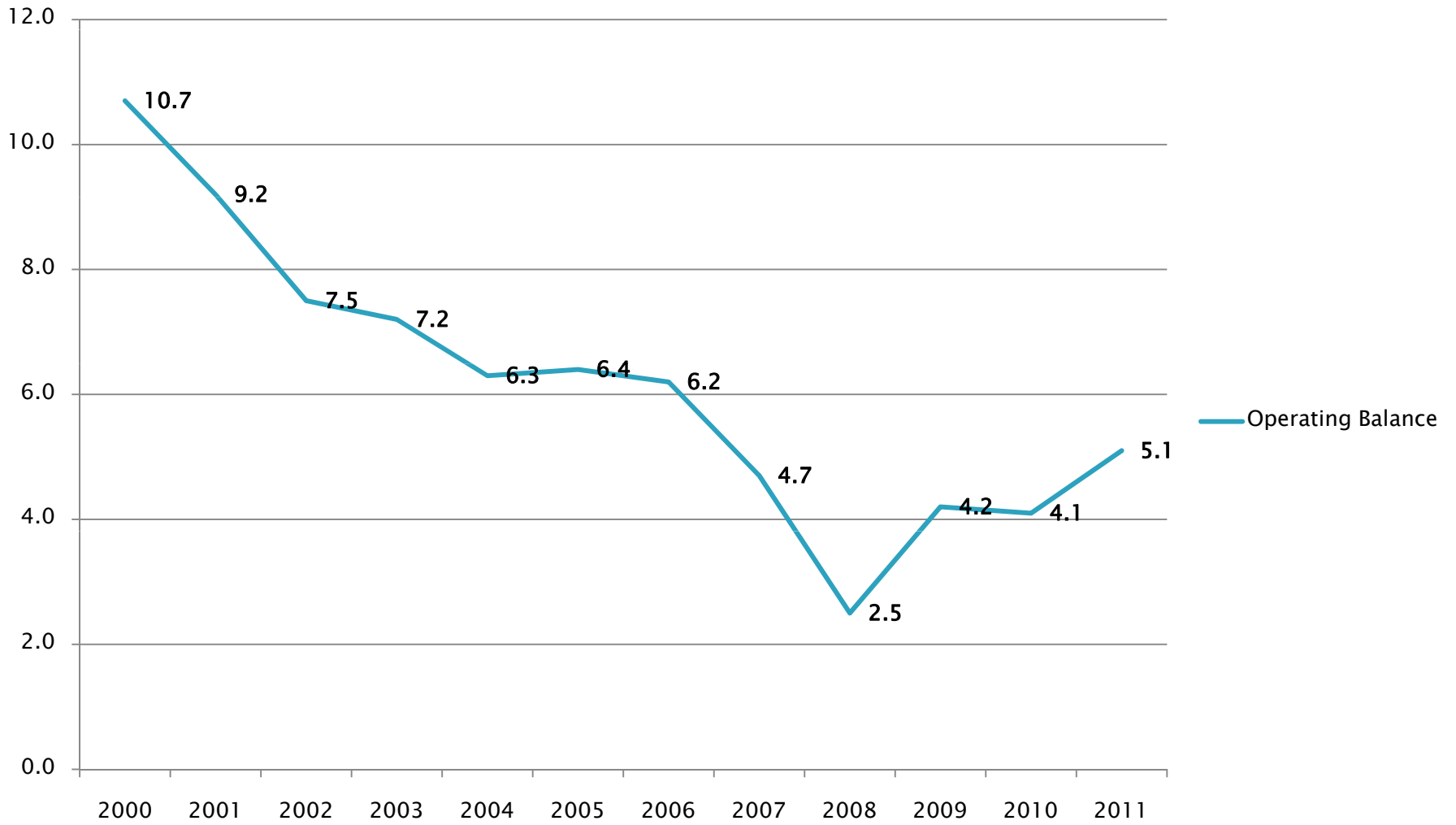


## General Fund Cash Balance History 2000–2011

Year	Cash Balance (Dec. 31 st)
2000	\$ 2,528,936.18
2001	\$ 2,334,790.23
2002	\$ 1,908,819.54
2003	\$ 1,894,719.46
2004	\$ 1,859,020.39
2005	\$ 1,724,850.73
2006	\$ 1,793,946.27
2007	\$ 1,457,347.59
2008	\$ 820,686.50
2009	\$ 1,341,736.59
2010	\$ 1,218,852.82
2011	\$ 1,530,970.06

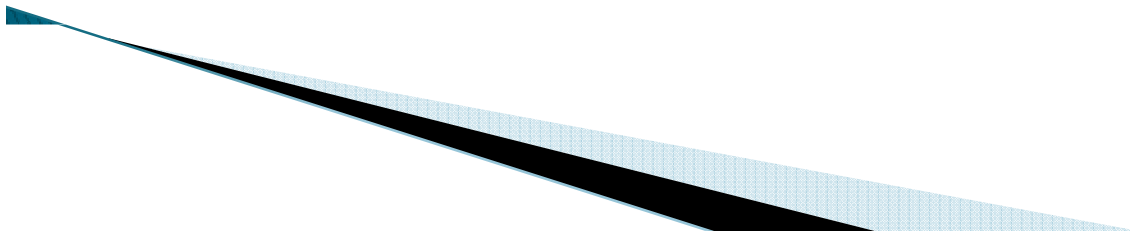


# General Fund Operating Balance (Percentage by Year)

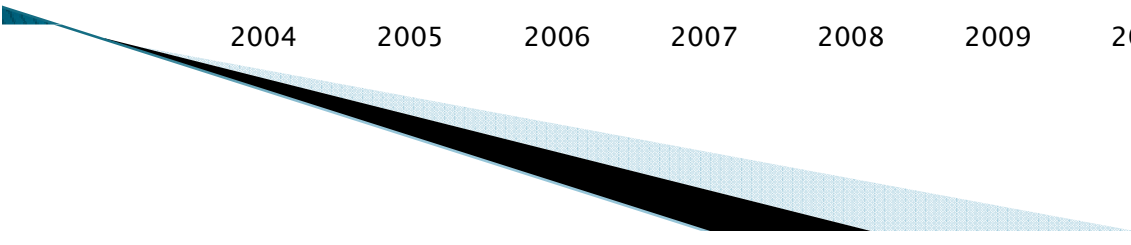
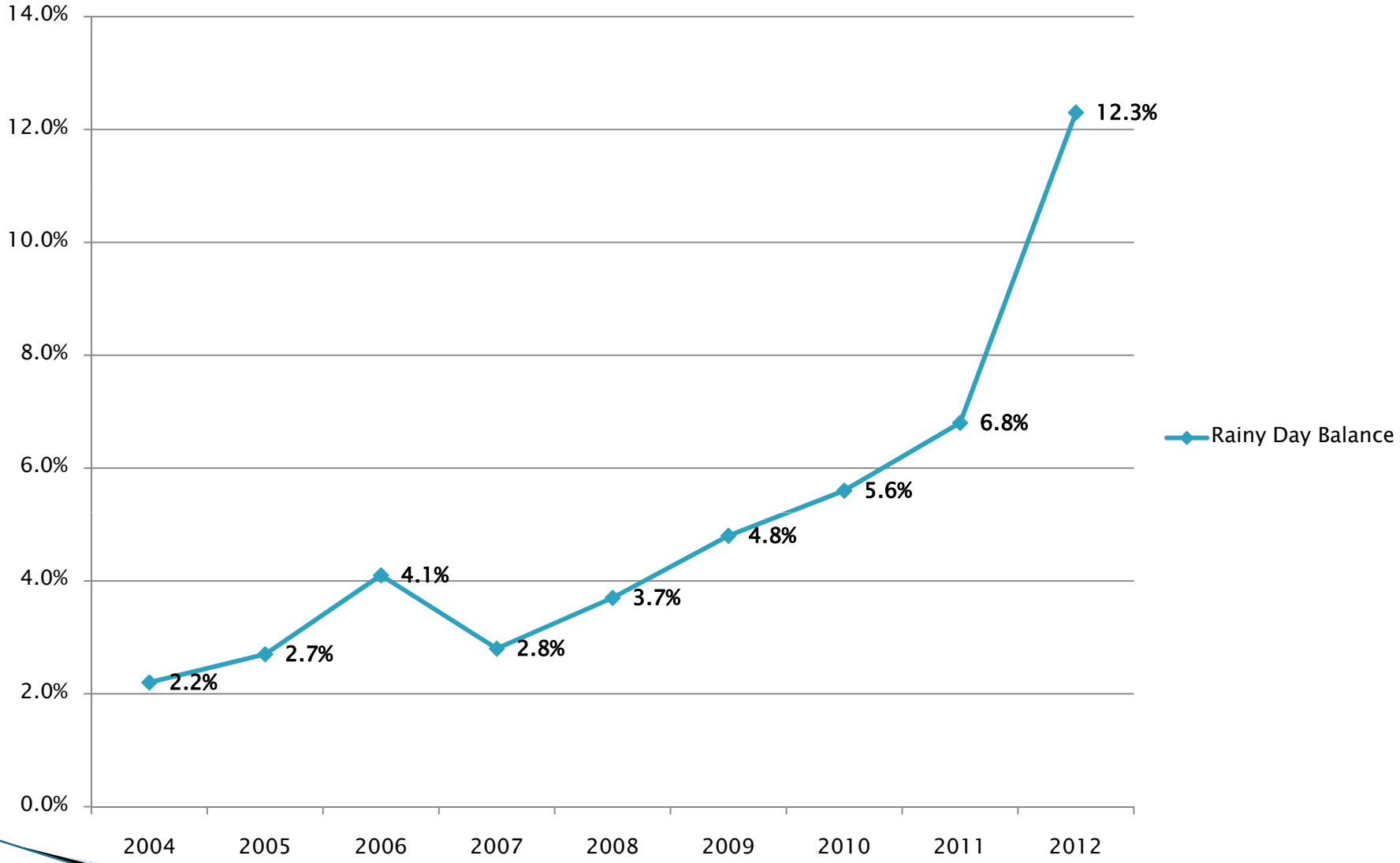


## Rainy Day Balance History (as of January 1<sup>st</sup>) 2004–2012

Year	Cash Balance (Jan. 1 <sup>st</sup> )
2004	\$ 590,000.00
2005	\$ 790,000.00
2006	\$ 1,105,500.00
2007	\$ 812,505.17
2008	\$ 1,162,505.17
2009	\$ 1,557,156.39
2010	\$ 1,800,000.00
2011	\$ 2,023,918.34
2012	\$ 3,671,590.60



# Rainy Day Balance 2004 - 2012



County	School District	Circuit Breaker Loss 2011	Enrollment	Per Pupil Loss
Lake	Gary Comm. Schools	\$ 14,399,727	11161	\$ 1,290.18
Marion	Indianapolis Public Schools	\$ 13,701,833	33080	\$ 414.20
Marion	MSD Franklin Township	\$ 9,064,744	8952	\$ 1,012.59
Madison	Anderson Comm. Schools	\$ 8,826,397	8308	\$ 1,062.40
Marion	MSD Wayne Township	\$ 5,990,813	16003	\$ 374.36
Delaware	Muncie Comm. Schools	\$ 5,794,174	6894	\$ 840.47
Allen	Ft. Wayne Comm. Schools	\$ 4,858,432	31213	\$ 155.65
St. Joseph	South Bend Comm. Schools	\$ 4,304,040	19948	\$ 215.76
Hamilton	Westfield Washington	\$ 4,264,266	6275	\$ 679.56
Lake	East Chicago Schools	\$ 4,001,352	5683	\$ 704.09
Johnson	Clark Pleasant	\$ 3,822,765	5880	\$ 650.13
Hendricks	Avon Schools	\$ 3,801,181	8498	\$ 447.30
Elkhart	Elkhart Comm. Schools	\$ 3,692,966	<b>13135</b>	\$ 281.15
Vigo	Vigo County Schools	\$ 3,555,827	15891	\$ 223.76
Hamilton	Noblesville Comm. Schools	\$ 3,420,594	9181	\$ 372.57
Marion	MSD Lawrence Township	\$ 3,070,101	15456	\$ 198.63
Hendricks	Brownsburg Schools	\$ 2,709,517	7548	\$ 358.97
Marion	MSD Decatur Township	\$ 2,540,863	6435	\$ 394.85
Marion	Beech Grove Schools	\$ 2,503,519	2628	\$ 952.63
Lake	Hammond City Schools	\$ 2,327,596	14332	\$ 162.41
Allen	Northwest Allen County	\$ 2,111,874	6331	\$ 333.58
<b>Johnson</b>	<b>Franklin Community Schools</b>	<b>\$ 2,102,548</b>	<b>5070</b>	<b>\$ 414.70</b>
Elkhart	Concord Schools	\$ 2,026,835	4863	\$ 416.79
Elkhart	Goshen Community Schools	\$ 2,026,742	6371	\$ 318.12
Cass	Logansport Comm. Schools	\$ 2,013,096	4243	\$ 474.45
Allen	Southwest Allen County	\$ 1,823,922	7071	\$ 257.94
Johnson	Center Grove Schools	\$ 265,743	7658	\$ 34.70
Johnson	Greenwood Schools	\$ 37,792	3799	\$ 9.95
Hamilton	Carmel Clay Schools	\$ 215,969	15493	\$ 13.94
Hendricks	Plainfield Schools	\$ 552,887	4808	\$ 114.99

*Franklin ranked 22<sup>nd</sup> in total dollar loss state-wide*

**Circuit Breaker Per Pupil Loss (as estimated in October 2010)**

<b>County</b>	<b>School District</b>	<b>Circuit Breaker Loss 2011</b>	<b>Enrollment</b>	<b>Per Pupil Loss</b>
Lake	Gary Comm. Schools	\$ 14,399,727	11161	\$ 1,290.18
Madison	Anderson Comm. Schools	\$ 8,826,397	8308	\$ 1,062.40
Marion	MSD Franklin Township	\$ 9,064,744	8952	\$ 1,012.59
Marion	Beech Grove Schools	\$ 2,503,519	2628	\$ 952.63
Delaware	Muncie Comm. Schools	\$ 5,794,174	6894	\$ 840.47
Lake	East Chicago Schools	\$ 4,001,352	5683	\$ 704.09
Hamilton	Westfield Washington	\$ 4,264,266	6275	\$ 679.56
Johnson	Clark Pleasant	\$ 3,822,765	5880	\$ 650.13
Cass	Logansport Comm. Schools	\$ 2,013,096	4243	\$ 474.45
Hendricks	Avon Schools	\$ 3,801,181	8498	\$ 447.30
Elkhart	Concord Schools	\$ 2,026,835	4863	\$ 416.79
<b>Johnson</b>	<b>Franklin Community Schools</b>	<b>\$ 2,102,548</b>	<b>5070</b>	<b>\$ 414.70</b>
Marion	Indianapolis Public Schools	\$ 13,701,833	33080	\$ 414.20
Marion	MSD Decatur Township	\$ 2,540,863	6435	\$ 394.85
Marion	MSD Wayne Township	\$ 5,990,813	16003	\$ 374.36
Hamilton	Noblesville Comm. Schools	\$ 3,420,594	9181	\$ 372.57
Hendricks	Brownsburg Schools	\$ 2,709,517	7548	\$ 358.97
Allen	Northwest Allen County	\$ 2,111,874	6331	\$ 333.58
Elkhart	Goshen Community Schools	\$ 2,026,742	6371	\$ 318.12
Elkhart	Elkhart Comm. Schools	\$ 3,692,966	<b>13135</b>	\$ 281.15
Allen	Southwest Allen County	\$ 1,823,922	7071	\$ 257.94
Vigo	Vigo County Schools	\$ 3,555,827	15891	\$ 223.76
St. Joseph	South Bend Comm. Schools	\$ 4,304,040	19948	\$ 215.76
Marion	MSD Lawrence Township	\$ 3,070,101	15456	\$ 198.63
Lake	Hammond City Schools	\$ 2,327,596	14332	\$ 162.41
Allen	Ft. Wayne Comm. Schools	\$ 4,858,432	31213	\$ 155.65
Hendricks	Plainfield Schools	\$ 552,887	4808	\$ 114.99
Johnson	Center Grove Schools	\$ 265,743	7658	\$ 34.70
Hamilton	Carmel Clay Schools	\$ 215,969	15493	\$ 13.94
Johnson	Greenwood Schools	\$ 37,792	3799	\$ 9.95

*Franklin ranked 12th in per pupil loss state-wide*



1. The employees of Franklin Community Schools have worked diligently to make due with less. Retained over \$1,000,000 in Capital Projects and \$530,000 from Bus Replacement to assist with the Circuit Breaker loss.
  2. In a normal environment, 2011 would be considered an extremely successful year from a financial perspective.
    1. Transportation Fund is in the black for the first time in several years.
    2. General Fund balance is up (Jobs Ed. dollars supplemented, Teacher/Admin. medical costs deferred)
    3. Rainy Day Fund is up significantly (by design). Used to offset Circuit Breaker losses.
      1. Rainy Day Balance will be accessed in June, 2012 for approximately \$1,361,000 to offset Circuit Breaker loss. That will return Rainy Day to our 2011 balance.
  3. How do we address the Circuit Breaker situation?
    1. General Assembly may reconsider the lost New Facility Appeals
    2. General Assembly could reinstitute the Circuit Breaker replacement credits
    3. County could institute a Local Option Income Tax to offset Circuit Breaker loss
    4. General Assembly could revise Debt Restructuring code and allow extending debt repayment
- 