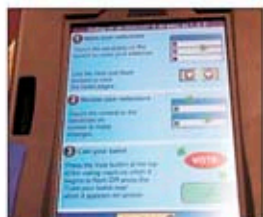


HOW TO VOTE: USING THE COUNTY'S ELECTRONIC VOTING MACHINES



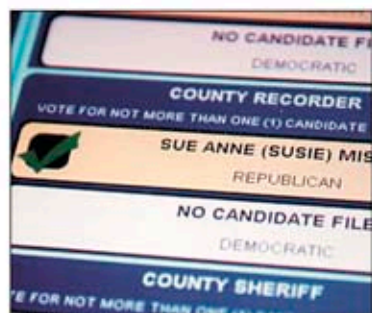
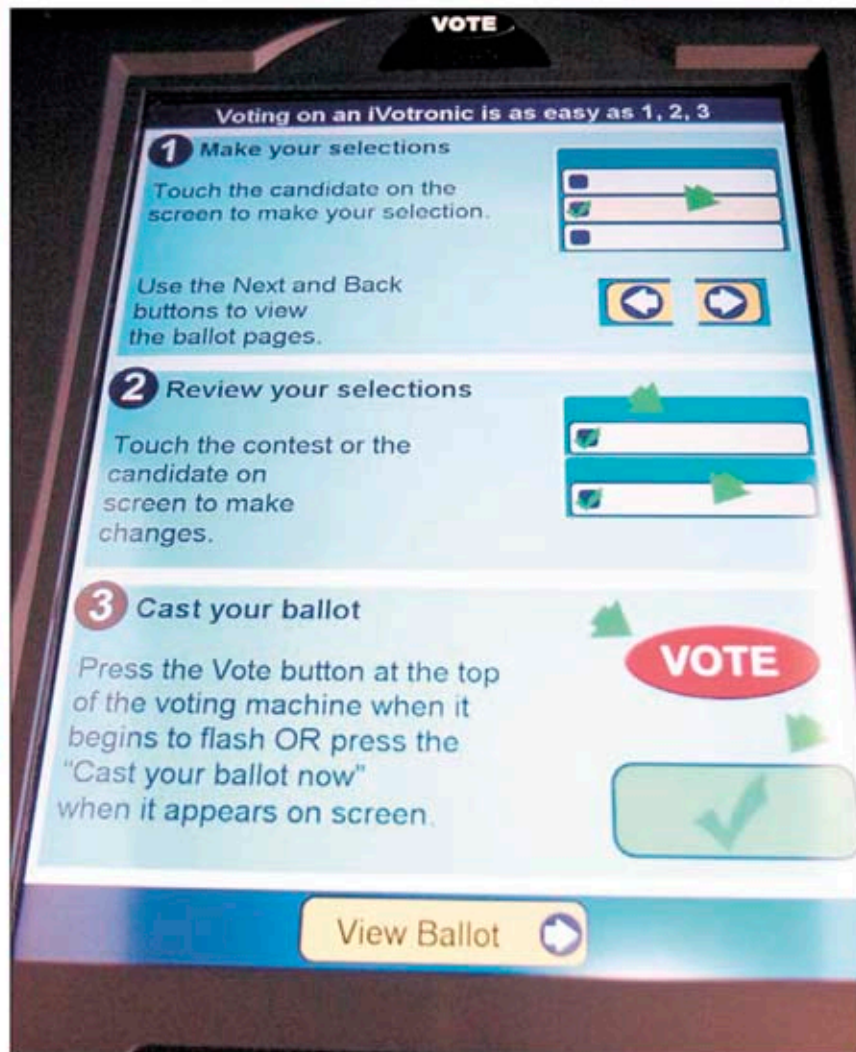
1 The terminals. The touchscreen voting terminals are mounted on a stand with side panels for privacy. When you get to the polls, show your photo identification and sign the poll book. Poll workers give you a card with instructions on how to use the terminal. Instructions also are on the voting machine screen.



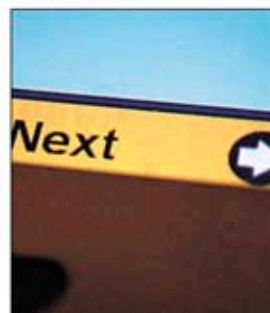
2 Personalized electronic ballot. Poll workers take the authorization card and activate your ballot. Touch "View Ballot" to see the ballot. Instructions appear on the screen. Poll workers remove the activator and allow you to cast your ballot in private.



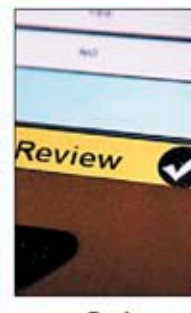
3 Electronic ballot. You will see a 15-inch electronic display of the ballot. Use your finger or rubber stylus to touch the name of the candidate you are voting for. If you choose to vote straight party ticket, you will still need to mark your votes in school board and public referendum questions, since those are non-partisan.



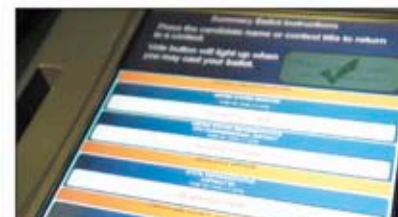
4 Changing your mind. Once you have touched the candidate's name, a green check mark appears next to the name and the line is highlighted. If you change your mind or pick the wrong candidate, you can either change or cancel a selection. **To change a selection,** touch the candidate's name of your new choice. **To cancel a selection,** touch the same name a second time. The check mark and highlight will disappear.



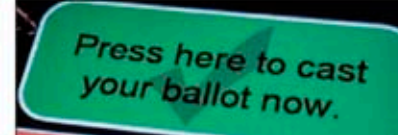
5 Next page. Go to the next page of the ballot by touching the yellow "Next" area. Touching the yellow "Back" and "Next" areas allow you to navigate through the ballot like a book. You can cancel or change your selections while navigating through the ballot.



6 Review ballot. Once you are done voting, review your choices by hitting the yellow "Review" button at the bottom of the screen. You must touch the yellow "Review" button before casting your vote.



7 Selections displayed. After hitting the "Review" button, all of your selections will be displayed on the screen. If you did not vote in a race, "No Selection Made" will be displayed under the office. You can change your selections by touching the office or name of a candidate. A new screen will be displayed. Make your selections.



8 Vote. Once you have reviewed the ballot and are sure of your choices, touch the red "Vote" button or the green "Press here to cast your ballot now" selection. Both choices will flash. **Remember:** You must review the entire ballot before you touch the red "Vote" button or the green "Press here to cast your ballot now" selection. If you attempt to press the "Vote" button without viewing the entire ballot, you will get an error message. Once you hit the red "Vote" button or the green "Press here to cast your ballot now" selection, you must touch "Confirm" for your vote to be recorded.



9 Confirm ballot. One more screen will appear asking you to "Confirm" your ballot. If you are ready to cast the ballot, touch "Confirm." If you want to make any changes, touch "Return to Ballot." Once you touch "Confirm," your vote will be recorded.

10 Sign out. Voters must sign out at the clerk's table before they leave the polling place.

HOW DO I?

Make a selection
Touch the candidate's name

Change a selection
Touch the candidate's name of your new choice.

Cancel a selection
Touch the same name a second time.

Change ballot pages
Touch "Next" or "Back" in the lower corners of the screen.

Cast the ballot
Touch "Review Ballot." Then hit the red "Vote" button.