



CG, EDINBURGH ADVANCE

Trojans, Lancers move on to sectional finals; Whiteland loses close game to Chatard.

PAGE B1

WEEKEND



CAPTORS SET DEADLINE FOR U.S. JOURNALIST

Group says if demands aren't met by Feb. 26, it will kill American.

PAGE A7



GIRL SCOUT COOKIES: WHO CARES IF THEY'RE FATTENING?

PAGE C1



DAILY JOURNAL

www.thejournalnet.com

SATURDAY-SUNDAY, FEBRUARY 11-12, 2006

Johnson County, Indiana

\$1.00

WEATHER



Today
Skies: Flurries
Temps: High 37; low 25

MAP, PAGE A8

EDITOR'S BLOG

Find out about what southsiders are saying about the proposed smoking ban in Greenwood.

Web Extra
Visit the editor's blog at www.thejournalnet.com

INSIDE

In time for Valentine's Day
Model Heidi Klum and other romance experts talk about their picks for the most romantic song, meal and more.

Be dazzling when you smile
Brush up on ways to whiten your teeth.

TODAY'S USA WEEKEND

COMING UP

High-caliber statistics
Though the number of people applying for gun permits isn't a record yet, police from two local law enforcement agencies say this year's figures will top 2005's.

What's in a name?
More area churches are dropping their denomination from church name in hopes that it will help them increase their numbers.

Sliced from the menu
Hurricane Wilma wiped out much of the budding tomato crop in Florida last year, and winter chills have stifled tomato growth in other areas. The tomato shortage is forcing restaurant owners to choose between paying more for tomatoes and cutting the red salad stacker from their menu offerings.



NEXT WEEK

DEATHS

- Greenwood
Charlene E. Simpson, 91
Trafalgar
- Karen Ann Reingardt, 62
Indianapolis
- Ethel Margaret Ratz, 90
Elsewhere
- Patricia Ann Dewar, 67
Mary E. Smith, 80
Basil Theo Wallace, 85

INDEX

- Accent.....C1-C6
- Business.....B6-B7
- Classified.....D1-D6
- Editorials.....A4
- Johnson County.....A3
- Obituaries.....A5
- Police, fire.....A3
- Real Estate.....E1-E6
- Sports.....B1-B5, B8
- Weather.....A8

CALL US

Main switchboard
736-7101
Delivery: 736-2777,
(888) 736-7101
Advertising: 736-2700
News tips: 736-2712



6 01442 20100 2

INSIDE: WE'VE GOT NEW THINGS FOR YOU, SOUTHSIDERS

TAKE FIVE

A guide to what's going on in your community.

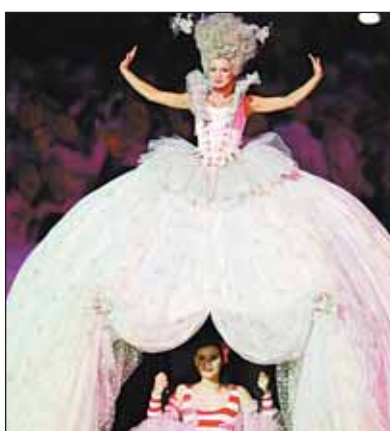


KNOW YOUR NEIGHBOR
Center Grove area resident Joyce Long

Get Personal

A Whiteland man's quest to find a Valentine's Day gift for his wife. Come on guys, you can relate.

2006 WINTER OLYMPICS: OPENING CEREMONY



BENVENUTO

Winter Games open with pomp, surrealism



Above: Fireworks light up the Olympic rings during the opening ceremony for the 2006 Winter Olympics in Turin, Italy, on Friday. Top left: Stefania Belmondo of Italy, a two-time gold medalist, lights the flame with the Olympic torch. Top middle and right: Dancers and singers perform.

By DEBORAH HASTINGS
THE ASSOCIATED PRESS

TURIN, Italy
A dazzled, cheering audience danced on their chairs in the win-
ter cold Friday night and the opening ceremony of the Winter Games became one giant house party. Passion was the show's theme, and passion was what poured from the audience, right up to the arrival of the Olympic torch, carried by skiing hero Alberto "La Bomba" Tomba, who ran up the stage steps and handed it off to a succession of Italian medal winners.

Ultimately it was Stefania Belmondo, a two-time gold medal winner in cross-country skiing, who touched the flame to a wire that ignited fireworks and lit the Olympic cauldron. The cheering crowd screamed its delight, just one of the many times it did so throughout the three-hour show. But it wasn't truly over until the big man sang. Luciano Pavarotti performed "Nessun Dorma," ("Let No One Sleep"), from Puccini's "Turandot," an aria that the tenor has turned into a signature piece.

(SEE GAMES, BACK PAGE)

ON TV

Some of the major Olympic events on the TV schedule this weekend:

- | | |
|--|--|
| Today | Sunday |
| Women's hockey
Noon to 2:30 p.m.,
CNBC | Men's hockey
1 to 3:30 p.m., CNBC |
| Women's moguls finals,
figure skating,
luge
8 to 11:30 p.m.,
WTHR-Channel 13 | Speedskating,
luge
3 to 6 p.m.,
WTHR-Channel 13 |
| | Luge finals,
ski jumping,
snowboarding
7 to 11 p.m.,
WTHR-Channel 13 |

Results mixed in drug stings

Most stores limited officers trying to buy cold medicine

By ANNIE GOELLER
DAILY JOURNAL STAFF WRITER
agoeller@thejournalnet.com

Quick relief for the sniffles is available, but don't ask for too much cold medicine.

State law lays out how much cold medicine folks can buy at a convenience store, according to police. On Thursday, clerks at 44 of 50 gas stations, truck stops and convenience stores passed a recent test by Johnson County sheriff's deputies on a state law that specifies where cold medicines should be displayed and how much customers can buy, according to police reports.

The law is a tool to help police cut down the number of meth labs in the state, Sheriff Terry McLaughlin said. Ephedrine and pseudoephedrine, two common ingredients in cold medicine, can be used to make the drug methamphetamine.

Sheriff's deputies visited the stores Thursday morning and afternoon.

Six convenience store clerks broke the law by selling too much medicine to detectives.

Now, those workers could face jail time and a fine.

This week's sweep was the second time police have checked for

(SEE STINGS, BACK PAGE)



DAILY JOURNAL FILE PHOTO
Indiana residents who want to buy cold medicines containing ephedrine or pseudoephedrine must show ID, according to Indiana law. Also, retailers are limited in how many packs of medication they can sell to one person.

Schools looking at special fees to pay for buildings

By JO ELLEN WERKING WEEDMAN
DAILY JOURNAL STAFF WRITER
jweedman@thejournalnet.com

In Center Grove, good schools equal an attractive community. For developers, that's a formula for success. More families coming to Center Grove for schools means

more houses will be built. On the negative side, though, more families means the need for more schools and, ultimately, higher taxes for everyone. It's a cycle Center Grove wants to break, or at least slow down, by assessing an impact fee on new homes.

Other school districts in the county face similar problems. They, too, are looking at fees to help pay for new schools. Officials at Clark-Pleasant and Franklin schools said they are interested in working with Center Grove officials to study how an impact fee could be paid by

developers and put into a fund to pay for new schools needed because of new housing developments. Center Grove School Board member Jim Copp has been working with local officials and state legislators to study how the fee could be charged.

The fee would not replace property taxes or pay for teachers or books. Instead, the money would help offset some of the cost of building new schools. All three school districts are

(SEE FEES, BACK PAGE)