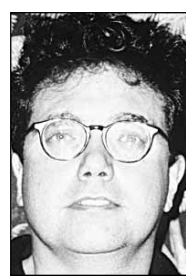


McCartney, Clarkson debut on Grammys

Old-school talent and contemporary favorites meet on "The 48th Annual Grammy Awards" (8 p.m., CBS). Kelly Clarkson will make her Grammy debut. So will Paul McCartney.



Kevin McDonough

ern Nancy Drew drama is a natural to make the cut when the new CW Network debuts next September, broadcasting the best of the UPN and WB schedules.

But is anybody watching? Last week "Veronica Mars" was ranked 118 out of 121 network shows, attracting barely 1.5 million viewers. There comes a time when even cult shows have to find an audience or cease to exist. Earth to "Mars" fans: Your show needs your support.

Tonight's other highlights

- High noon in the land of vast waistbands on "The Biggest Loser: Special Edition" (8 p.m., NBC, TV-14).
The body of a murdered teen who had suffered from comic-book delusions yields clues on "Bones" (9 p.m., Fox, TV-14, D, L, V).
In the midst of crisis, Sawyer's indifference speaks volumes on "Lost" (9 p.m., ABC, TV-PG, D, L).
Kathleen Turner guest stars on "Law & Order" (10 p.m., NBC, TV-14).

Cult choice

Eclipsed by scandal, doomed by a runaway budget and capsized by its four-hour running time, the 1963 epic "Cleopatra" (8 p.m., TCM) remains the yardstick by which Hollywood mega-flops are measured.

Series notes

- An organ recital on "George Lopez" (8 p.m., ABC, TV-14) ... A fight for control of the club on "South Beach" (8 p.m., UPN, TV-PG) ... A milestone for Brooke on "One Tree Hill" (8 p.m., WB, TV-PG) ... The burdens of bachelorhood on "Freddie" (8:30 p.m., ABC, TV-PG) ... Charm school on "Beauty and the Geek" (9 p.m., WB, TV-PG).
"African American Lives" (9 p.m., WFYI, WTIU) wraps up its final two hours, tracing the family history of eight contemporary black Americans back to before the Civil War. It then uses DNA science to trace roots back beyond the slave days to West Africa and meet people who may even be distant relatives to one participant.
The theft of school funds looms large on "Veronica Mars" (9 p.m., UPN, TV-PG). Many observers believe this post-mod-

Kevin McDonough is a TV columnist for United Features Syndicate.

WEDNESDAY EVENING FEBRUARY 8, 2006

Table with columns for time slots (7 PM, 7:30, 8 PM, 8:30, 9 PM, 9:30, 10 PM, 10:30, 11 PM, 11:30) and various TV channels (WTTV, WRV, WISH, WTHR, WFY, WNDY, WTIU, WHMB, WCL, WXIN, WIPX, WTBU, A&E, AMC, AP, BET, BRAVO, CNBC, CMT, CNN, COM, DISC, EI, ESPN, ESPN2, FAM, FNC, FOOD, FOXMV, FOXSM, FX, HALL, HGTV, HIST, LIFE, MSNBC, MTV, NICK, OXY, SCIFI, SPIKE, TBS, TCM, TLC, TNT, TOON, TVL, USA, VH1, WE, WGN, DISN, ENC, HBO, SHOW, MAX, TMC, STARZ) listing programs and descriptions.

ACCENT ON PEOPLE

The Associated Press

Madonna compares singers to terrorists

Madonna says she's more tenacious than a terrorist at least when it comes to her music career.

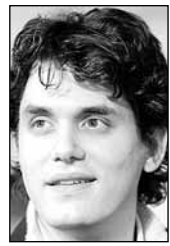


MADONNA

JACKSON, Miss.

Mayer says he's giving up on bubble gum pop

John Mayer says his next album won't have the "pop sweetness" of current radio hits.



MAYER

"It's a really tricky thing making music that can appeal to everybody without certain ingredients that have proven themselves as being very effective in appealing to people," Mayer said.

On his 2005 album Try with the John Mayer Trio, the singer-songwriter shifted gears from pop music to blues. Mayer said he hopes to continue that trend with his upcoming third solo album, promising no "pop music tricks."

"What's the difference between a pop star and a terrorist? You can negotiate with a terrorist," jokes Madonna, poking fun at her diva reputation in the March issue of Harper's Bazaar, which hits newsstands Feb. 21.

Madonna, 47, also reveals that she and her husband of five years, 37-year-old filmmaker Guy Ritchie, often don't agree on vacation destinations.

"I'm not into lying in the sun," she said. "He loves the sea and fishing and being on a boat, outdoors, nature stuff. I'd rather go to India and check out all the temples or go to Bhutan. We have had this discussion, and he's got to start doing more of the holidays I like to do."

Madonna, a devout practitioner of Kabbalah, a sect of Judaism, said she likes life's finer things, including wine.

Actor stays true to his family with show CALENDAR

By BRIDGET BYRNE THE ASSOCIATED PRESS

BURBANK, Calif.

Freddie Prinze Jr. is surrounded by a group of giggling girls. But a fan attack it's not; merely a scene for his sitcom, "Freddie," shooting on a Warner Bros. soundstage.

Prinze, 29, still looks as cute as a teen idol should be, but in this episode, his character, Freddie Moreno, is trying to fulfill surrogate dad duties, chiding niece Zoey and her friends for behaving inappropriately.

Moreno, a successful chef planning to enjoy the bachelor high-life with rich pal Chris, has been drawn back into family responsibilities. For various reasons, his sister and her young daughter, his grandma, and his widowed sister-in-law all have moved in with him, re-enveloping him in the women's world in which he grew up after his father abandoned the family.

Besides being the title star, Prinze also is co-creator, co-writer, and co-executive producer of the ABC sitcom, which airs at 8:30 p.m. Wednesdays, and he takes his multitasking duties seriously.

"It's a lot of responsibility, but I wouldn't have it any other way ... this is what I need," he says. "There are things that I've done that people are so quick to take credit for and there's really not a lot I can do about that because of the perception of actors. So in order to protect myself, I needed everyone to understand that this is something that I love and this is something that I watch over and I protect on a daily basis."

Nevertheless, he immediately dishes out thanks to his cast, crew, and co-creators, Bruce Helford and Bruce Rasmussen, because, "I don't delude myself that I care any more than they do."

Famous for horror and comedy movies popular with young audiences ("I Know What You Did Last Summer," "Scooby Doo," both movies also starring his wife, actress Sarah Michelle Gellar), Prinze knew the TV industry would expect his sitcom character to be "that perfect guy that everyone wants to take their daughter to the prom ... but that's not exciting," he says.

So he gave Moreno many flaws. "He's a touch too arrogant. He's sort of been raised a little prince, to be perfect, and he believes a bit of that, and that gets him into trouble. That's the flaw we play up the most," says Prinze, who also describes his character as "not as book smart as your average bear."

He stresses Moreno's "family values ... everything takes a back seat to family. He lives in a house full of women. That's not every guy's dream, well it is, but not if they are family! That's a big sacrifice, and he makes it without even blinking because family takes care of family."



AP PHOTO

Freddie Prinze Jr., playfully wrestles with actress Chloe Suazo during a scene from "Freddie" which airs at 8:30 tonight on ABC.

order to protect myself, I needed everyone to understand that this is something that I love and this is something that I watch over and I protect on a daily basis."

Nevertheless, he immediately dishes out thanks to his cast, crew, and co-creators, Bruce Helford and Bruce Rasmussen, because, "I don't delude myself that I care any more than they do."

ShowPlace 16 Movies with Magic 1-800-FANDANGO 1598# 1-465 AT US HWY 31 SOUTH - INDIANAPOLIS. SHOWTIMES FOR FEBRUARY 08 - 09 SOMETHING NEW (PG-13) 2:10 4:40 7:00 9:45 WHEN A STRANGER CALLS (PG-13) 12:00 1:50 2:20 4:20 4:50 7:10 7:40 9:30 10:00 ANNAPOLIS (PG-13) 1:30 4:15 6:50 10:15 BIG MOMMA'S HOUSE 2 (PG-13) 11:40am 2:00 2:30 4:30 5:00 7:20 7:50 9:40 10:10 THE MATADOR (R) 12:50 3:00 5:15 8:00 10:20 NANNY MCPHEE (PG) 1:40 4:10 6:45 9:10 THE NEW WORLD (PG-13) 12:30 3:20 6:10 9:00 UNDERWORLD: EVOLUTION (R) 12:15 2:40 5:10 7:45 10:30 BROKEBACK MOUNTAIN (R) 11:50am 2:50 6:40 9:50 GLORY ROAD (PG) 1:45 4:45 7:30 10:25 HOODWINKED (PG) 1:20 4:00 6:30 8:50 LAST HOLIDAY (PG-13) 12:40 3:50 7:15 10:05 FUN WITH DICK & JANE (PG-13) 12:10pm DAILY THE CHRONICLES OF NARNIA (PG) 11:45am 3:10 6:15 9:15 WALK THE LINE (PG-13) 12:20 3:15 6:20 9:20

AMC Experienced The Difference. Matinee price for all shows until 6 p.m. Advanced ticketing available at MovieWatcher.com OR (317) 884-1780 R-Rating requires ID. GREENWOOD PARK 14 Madisson Ave and Fry Road SOMETHING NEW (PG13) \$ 2.00, \$3.00, \$15. WHEN A STRANGER CALLS (PG13) \$ 1.10, \$2.00, \$3.00, \$15. ANNAPOLIS (PG13) 1:30, 4:10, 7:35. BIG MOMMA'S HOUSE 2 (PG13) 1:40, 4:40, 7:50. THE MATADOR (R) 2:20, 5:20, 8:10. NANNY MCPHEE (PG) 2:40, 5:10, 7:40. END OF THE SPEAR (PG13) 1:15, 3:50. UNDERWORLD: EVOLUTION (R) 2:10, 4:50, 8:00. GLORY ROAD (PG) 1:25, 4:25, 7:25. HOODWINKED (PG) 1:50, 4:30, 7:15. LAST HOLIDAY (PG13) 1:30, 4:20, 7:30. FUN WITH DICK & JANE (PG13) 4:30. BROKEBACK MOUNTAIN (R) 1:00, 4:00, 7:30. KING KONG (PG13) 7:00. THE CHRONICLES OF NARNIA (PG) 1:00, 4:00, 7:10. WALK THE LINE (PG13) 1:30, 7:20. *SPECIAL ENGAGEMENT No passes or discount coupons

Today Meetings White River Rotary Club, 6:30 a.m., Pipers Café, 172 Melody Ave., Greenwood, off State Road 135 Christian Businessmen's Committee of Greater Greenwood, 7 a.m., Denny's restaurant, Main Street and Interstate 65, Greenwood Business and Professional Exchange, 8 to 10 a.m. Greenwood City Building lower level, 2 N. Madison Ave., Greenwood. Information: Ron Mote, 735-2010 TOPS (Take Off Pounds Sensibly), 9:30 a.m., Abundant Grace Lutheran Church, 2425 S. Emerson Ave. Information: 780-1324 Bargersville Area Senior Citizens, 10 a.m. to 3 p.m., 14 W. Old South St. Potluck lunch, cards; 6 to 9 p.m. music Oveateers Anonymous, 5:30 p.m., Greenwood United Methodist Church, 525 N. Madison Ave. Information: 870-9171 Order of Easter Star Chapter 439, 7:30 p.m., Franklin Masonic Lodge, 801 S. Main St. South Central Indiana Corvette Club, 7 p.m., Reeves Buick and Pontiac, 1250 U.S. 31 South, Greenwood. Information: 422-5445

A Zodiac Dream Family Salon & Spa 77 E. Jefferson Franklin, Indiana (317) 736-1974 Gift Certificates Available Valentines Day / Spa Get-away For HIM and HER... SWEETHEART 1/2 HOUR MASSAGE \$50.00 Including one of the following: MANICURE, PEDICURE, FACIAL, or HAIRCUT and STYLE THE SPOILED ONE 1 HOUR MASSAGE \$100.00 Includes Two: MANICURE, PEDICURE, FACIAL, or HAIRCUT and STYLE ROYAL TREATMENT 1 HOUR MASSAGE \$150.00 Includes everything: MANICURE, PEDICURE, FACIAL, HAIRCUT and STYLE (This package includes lunch!)

Saving for College? Start Now! Talk to a financial expert. Eric Feathers 738.5265 | eric.feathers@irwinunion.com 1073 West Jefferson Street | Franklin Securities, Advisory Services and Insurance Products Offered Through Linsco/Private Ledger - Member NASD/SIPC - Not FDIC Insured - No Bank Guarantee - May Lose Value - Not A Deposit - Not Insured By Any Federal Government Agency

CANARY CREEK CINEMAS 8 1/8 Mile West of Applebe's on Mallory Parkway SHOWTIMES FOR MONDAY THRU THURSDAY WHEN A STRANGER CALLS (PG-13) Mon.-Thurs 5:00 7:15 WALK THE LINE (PG-13) Mon.-Thurs 7:00 BROKEBACK MOUNTAIN (R) Mon.-Thurs 7:00 BIG MAMA'S HOUSE 2 (PG-13) Mon.-Thurs 5:00 7:15 UNDERWORLD (R) Mon.-Thurs 5:00 7:15 HOODWINKED (PG) Mon.-Thurs 5:00 7:15 GLORY ROAD (PG) Mon.-Thurs 7:00 THE CHRONICLES OF NARNIA (PG) Mon.-Thurs 7:00 www.canarycreekinemas.com